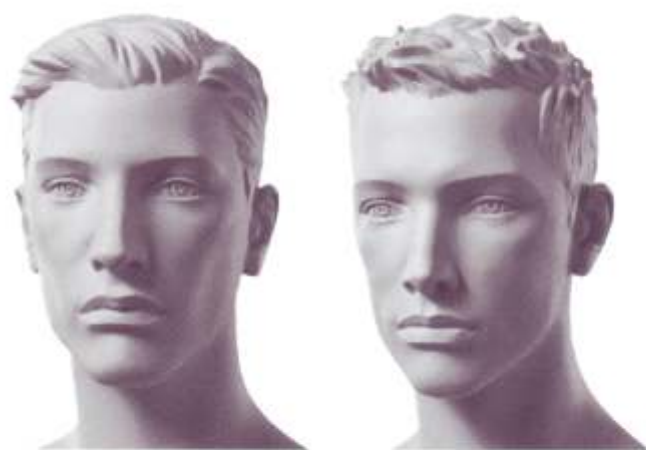


*Erasmus*



M A N



Z

Y



MT-1/A-1



MT-2/A-2



MT-3/A-3



ML-1



ML-2



SM-1



SM-2

**SYSTEM MANNEQUINS**

Our system mannequins are consisting out of:

- 3 different upper bodies (MT-1, MT-2, MT-3)
- 3 different pairs of arms (A-1, A-2, A-3)
- 2 different lower bodies (ML-1, ML-2)
- 2 different heads (Z, Y)

All parts are exchangeable.

**MANNEQUINS DE SYSTEME**

Nos mannequins de systeme sont composes de:

- 3 differents torsos (MT-1, MT-2, MT-3)
- 3 differentes paires de bras (A-1, A-2, A-3)
- 2 differentes paires de pieds (ML-1, ML-2)
- 2 differentes tetes (Z, Y)

Tous les elements sont combinaisables.

**SYSTEMFIGUREN**

Unsere Systemfiguren bestehen aus:

- 3 verschiedenen Oberkorpem (MT-1, MT-2, MT-3)
- 3 verschiedenen Armpaaren (A-1, A-2, A-3)
- 2 verschiedenen Unterkorpem (ML-1, ML-2)
- 2 verschiedenen Kopfen (Z, Y)

Alle Elemente sind kombinierbar.

**MANICHINI DI SISTEMA**

I nostri manichini di sistema si compongono di:

- 3 differenti cappoti del corpo (MT-1, MT-2, MT-3)
- 3 differenti paie di braccia (A-1, A-2, A-3)
- 2 differenti parte bassa del corpo (ML-1, ML-2)
- 2 teste differenti (Z, Y)

Tutte le parte sono intercambiati.

**MANNEQUIN'S DIMENSIONS**

	cm	inches
Height	185	73
Chest	98	39
Waist	76	30
Hip	96	38

**SHOES**

Heel	3	1,2
------	---	-----

International Display Works is a global company with agents in throughout the world.

The production is based in Vilnius, the capital of Lithuania, a member of the European Union.

Our leading technology, the use of innovative materials and the geographical position of the company give us the advantage of a very quick lead time.

Our products are manufactured from 100% recycled materials according to the standards of the European Union.

In this catalogue, we present system mannequins, but we prefer to develop and manufacture custom-designed products.

Therefore, 95% of our production is custom-made.



**O.M.A.Shopfitting Systems**

10 Reid Street Bayswater

Victoria 3153

Ph: 03 9762 8959

Fax: 03 9762 6191

[www.omasystems.com.au](http://www.omasystems.com.au)